

# COMMUNITY ENGAGEMENT REQUIREMENTS AT WARREN WILSON COLLEGE



Fall 2022

# Community Engagement Requirements

## Part of the Community Engagement Commitment

The Community Engagement Commitment is a graduation requirement for all Warren Wilson College students. You can complete it by progressing through the three Points of Engagement and Growth (PEGs).

### EXPLORE (PEG 1)

Students explore and reflect on their interests, values, skills, and self-awareness in a community context.

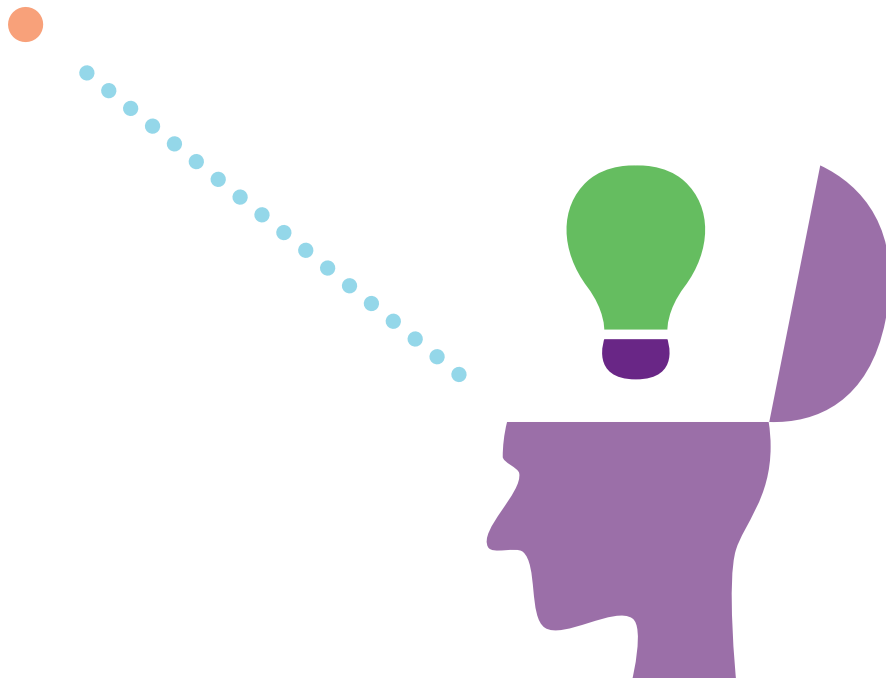


#### REQUIREMENTS:

- Incoming and current students will **ONLY** have to complete a First Year Seminar to finish their PEG 1. This is a new policy that began in 2019–20 and will continue, moving forward. Transfer students who enter the College with at least 24 credits will have this requirement waived.

# UNDERSTAND (PEG 2)

Students understand the complexity of a social or environmental issue through engagement and critical inquiry.



## REQUIREMENTS:

**By the end of your junior year, complete at least one of the following options:**

- Designated Community–Engaged (PEG 2) Course
- Bonner–led Understand (PEG 2) opportunity, such as Issue Workshop, Shiloh Community Garden, Big Brothers/Big Sisters, etc.
- Designated community engagement group experience, such as through your work crew or athletic team
- Participation in a Fall or Spring Break Trip
- Independent project:
  - a) 25 engagement hours in the same issue area
  - b) Must attend at least one Open Cabin Reflection Session to discuss your experience

# IMPACT (PEG 3)

Students complete a signature community engagement experience by working towards a community goal in collaboration with a community partner.



## REQUIREMENTS:

**By graduation, students must complete these criteria:**

- Collaborate with a community partner to meet one or more of their goals and address a specific social and/or environmental issue
- Engage in one of the following ways (for a minimum of 50 hours):
  - a) Community-engaged Academic Senior Capstone Project
  - b) Community-engaged Internship
  - c) Independent Community Project
  - d) Leadership of Understand (PEG 2) opportunity (i.e., designated work crew experience)
- Submit hours as an Impact on GivePulse
- Complete a reflection via online Impact form, video submission, or participation in a Log Cabin Reflection Session

## Transfer and Dual Enrollment Students

- **0–23 credits:** No exceptions made. Complete all expectations of First Year students
- **24–59 credits:** Exempt from Explore (PEG 1)
- **60+ credits:** Exempt from Explore (PEG 1) and Understand (PEG 2)

# FAQs

## COVID-19 Restrictions

### What types of community engagement/service are recommended for Fall 2022?

Almost all of our partner sites have expressed interest in engaging with volunteers in-person, as long as students are vaccinated (with the exception of students with medical or religious exemptions) and follow masking protocols. Our partners have agreed to follow the same precautions, and we will work collaboratively to ensure the safety of all participants. Should a partner site need to move to remote engagement due to evolving circumstances, we will do everything we can to support this shift and help students continue their experiences virtually. Through remote engagement, you will still be able to meet the goals of the Community Engagement Commitment while limiting the number of people you come into contact with.

### How will community-engaged courses work if there is a rise in COVID-19 cases?

If necessary, faculty will work with community partners to find alternate ways to build community engagement into these courses. This may happen through capacity-building projects or other remote tasks.

## General Questions

### How do I get PEG credit for independent community engagement projects I have completed?

Submit your hours as an Impact on GivePulse and answer the reflection questions related to the PEG you wish to complete. Community Engagement staff will follow up with you to confirm PEG completion.

### I am very active in community organizing around current social movements (vaccine mobilization, movements for Black lives, etc.). Can that work count toward my community engagement requirement?

The Community Engagement Commitment celebrates any and all forms of engagement and thus is not limited to work with nonprofit and/or government organizations. For any social justice work, please enter your hours as an Impact on GivePulse. Staff will review your submission to determine which PEG your work meets, and they will follow up with you.

### **How do I find opportunities for engaging in the community?**

GivePulse is your resource for finding and signing up for community engagement opportunities. Log-in to the Warren Wilson GivePulse page using your Warren Wilson Gmail credentials. Enter search terms such as, “Explore (PEG 1),” “Understand (PEG 2),” “Impact (PEG 3)” to find opportunities. You can also explore under the “Events” and “Classes” sections.

### **How do I find out about community-engaged (PEG 2) courses?**

A list of designated courses can be found on the Community Engagement page on myWWC. Here is the pathway to get you there: myWWC > Experiential Learning > Select “Community Engagement” on left menu.

### **What if I want to do something that isn't on GivePulse?**

Please complete a PEG 2 or PEG 3 Proposal Form (available on the Community Engagement myWWC page). Staff will review the form to determine which PEG your work meets, and they will follow up with you. After you complete your experience, we'll ask you enter your engagement hours as an “Impact” on GivePulse.

### **Where can I view my student community engagement record?**

All of your community engagement experiences—or impacts—are logged through GivePulse. The Community Engagement Office will log some of these for you, such as community-engaged courses. We encourage you to log your own impacts as well.

### **How do I know which PEGs I have completed?**

You can find this information on your unofficial transcript in myWWC. Here is the pathway to get you there: myWWC > Academics > Grades & Transcript > My Unofficial Transcript > Select “Community Engagement” from Division drop-down > View Unofficial Transcript.

## **IMPACT (PEG 3) General Questions**

### **How do I get started on my Impact (PEG 3)?**

Talk to faculty and staff, community partners, and students to brainstorm the different ways you can complete your signature community engagement experience. You can also meet with an integrated advising coach at this stage. We advise you to submit an Impact (PEG 3) Proposal form at this stage, so Community Engagement staff can confirm that your project idea meets the PEG 3 guidelines.

### **What counts as working to complete a community goal?**

This depends on the community partner. Ultimately, your collaboration with them must support them in meeting one or more goals that they have identified.

### **Can I get paid?**

Yes. Paid opportunities do not preclude them from being Impact (PEG 3) opportunities.

### **Are there any hour requirements? How much time do I have to commit?**

Signature community engagement experiences are a minimum of 50 hours.

## **PEG 3 Independent Projects**

### **What is an independent project?**

An independent project is one that doesn't meet the guidelines of an academic Capstone Project, community-engaged internship, or campus leadership experience.

### **How do I figure out an independent project? Where do I start to explore this?**

Set up a meeting with the Associate Director of Community Engagement to explore this possibility. You can also look on GivePulse to find Impact (PEG 3) opportunities that already exist.

## **PEG 3 Community-Engaged Internships**

### **Where do I find out about community-engaged internships?**

GivePulse has some available community-engaged internships listed. You can also set up a meeting with the Director of Internships to discuss possibilities.

### **What are the parameters of a community-engaged internship vs. a standard internship? Can they be the same? What is the approval process?**

Community-engaged internships must meet the requirements of Impact (PEG 3). The Director of Internships approves all community-engaged internships.

## **PEG 3 Campus Leadership for Community Engagement**

### **What are examples of Campus Leadership for Community Engagement?**

- Facilitating an Understand (PEG 2) opportunity for your work crew
- Providing leadership for your athletic team's Understand (PEG 2) Experience
- Leading a community-engaged Fall or Spring Break Trip



**Warren Wilson**  
COLLEGE